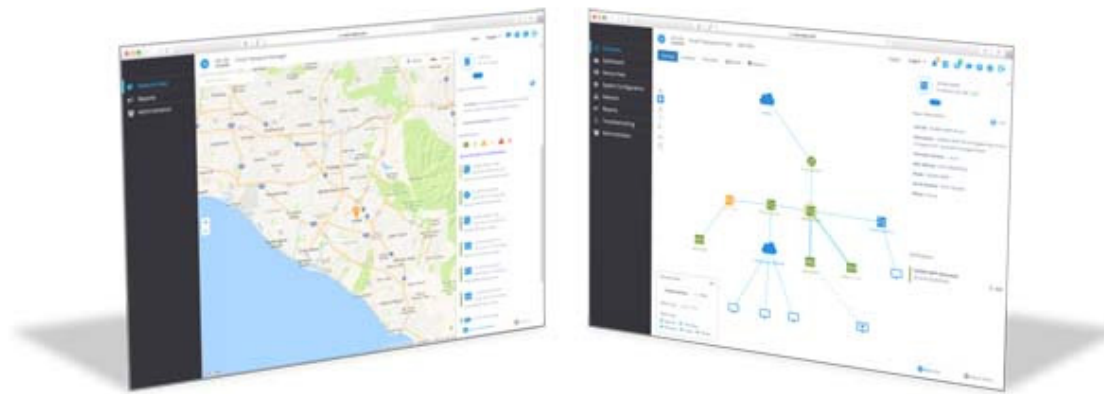


Cisco FindIT Network Probe

Easy Setup Guide



You can easily set up your FindIT Network Probe in this step-by-step guide.

- 1 System Requirements
- 2 Installing Probe
- 3 Configuring Probe
- 4 Using Probe
- 5 Connecting to Manager

1 System Requirements

The Cisco FindIT Network Probe is distributed as a virtual machine image. To run the Probe, your environment must meet the following requirements:

	Requirements
Hypervisor	<ul style="list-style-type: none"> Microsoft Hyper-V version 10.0 or above Oracle VirtualBox version 5.0.2 or above VMWare—It can be one of the following: <ul style="list-style-type: none"> ESXi version 5.5 or above Fusion version 7 or above Workstation version 12 or above
CPU	1 x 64-bit Intel architecture
Memory	512 MB
Disk Space	2 GB

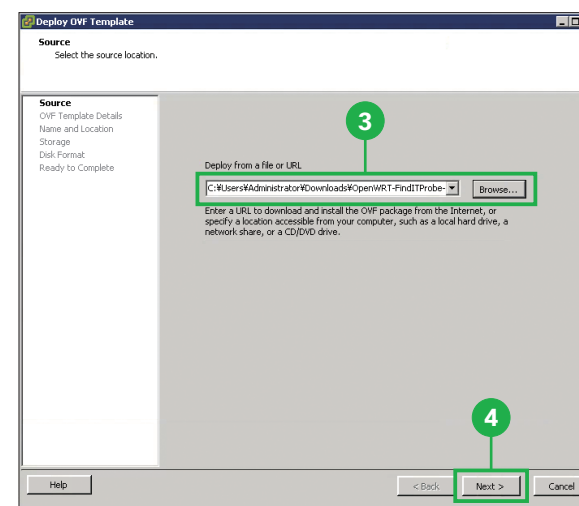
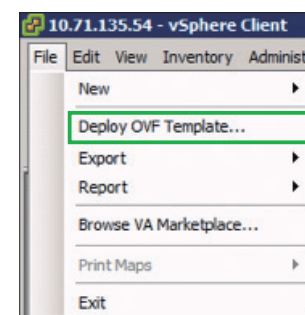
The Probe is administered through a web user interface. To use this interface, your browser must be one of the following:

- Microsoft Internet Explorer version 11
- Microsoft Edge version 38
- Mozilla Firefox version 48
- Google Chrome version 52
- Apple Safari version 9

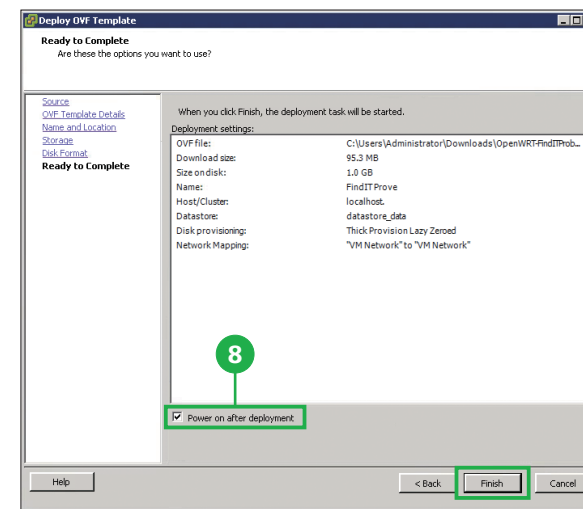
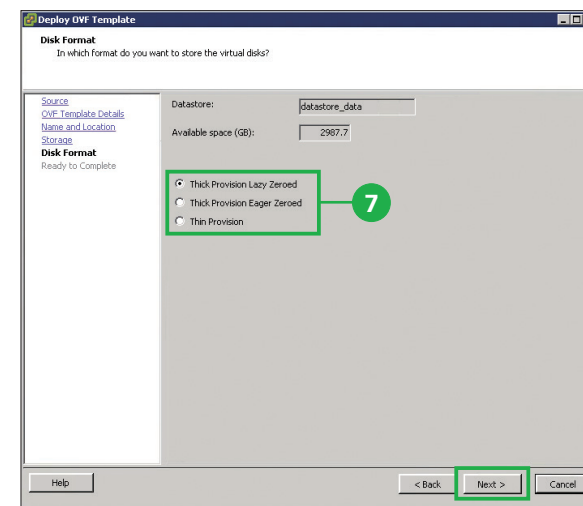
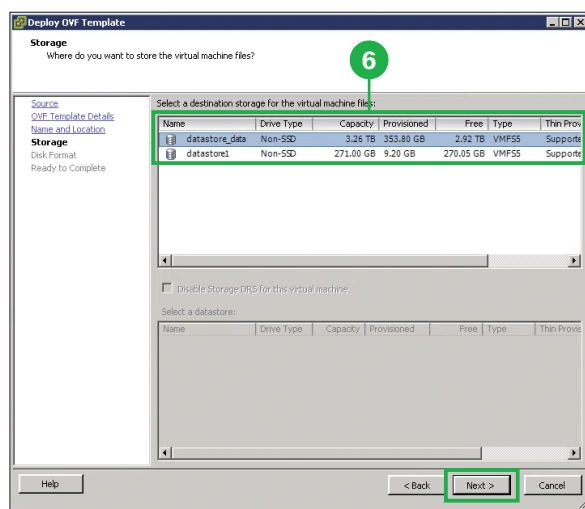
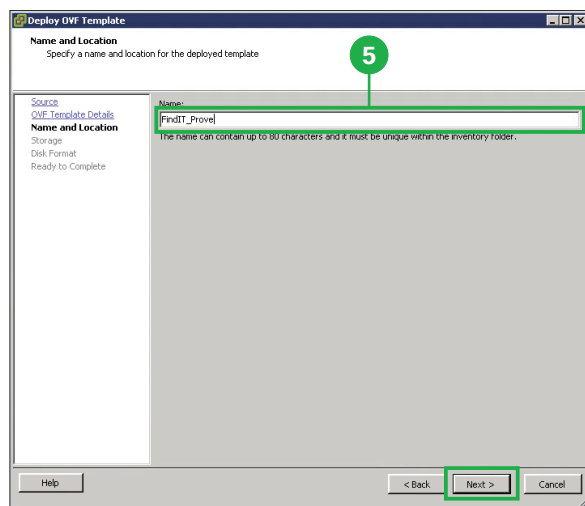
2 Installing Probe

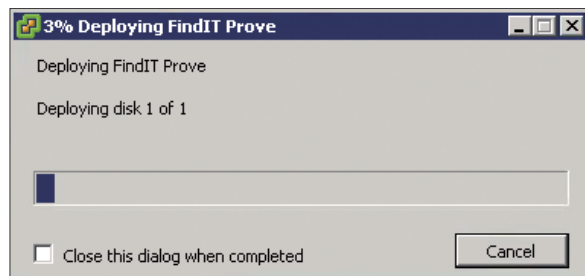
The Cisco FindIT Network Probe is provided as a virtual machine image, packaged in both the Distributed Management Task Force's Open Virtualization Format (OVF), and as a zipped Microsoft Hyper-V virtual machine.

The OVF deployment instructions using VMWare are discussed in this guide.

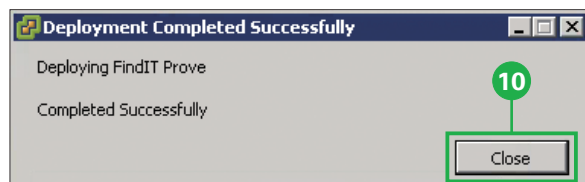


- 1 Download the Probe ova file by navigating to <http://www.cisco.com/go/findit> and selecting the [Download Software for this Product] link in the [Support] pane.
- 2 Log into ESXi and click [Deploy OVF Template] in [File] menu.
- 3 Click [Browse] and select the file that downloaded from cisco.com.
- 4 Click [Next].

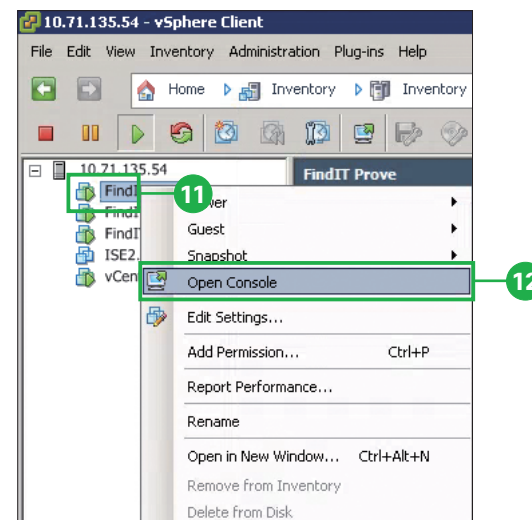




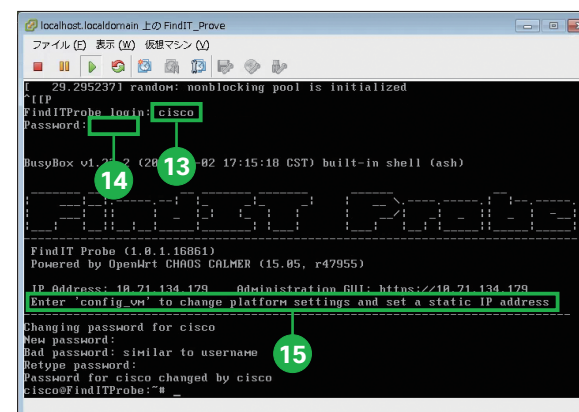
- 9 The VM deployment starts automatically and the deploying status popup will appear.



- 10 Click [Close] when displayed [Deployment Completed Successfully].



- 11 Right-click the VM.
- 12 Select [Open Console].



- 13 Enter the default username "cisco".
- 14 Enter the default password "cisco".
- 15 Check the IP address.

Caution

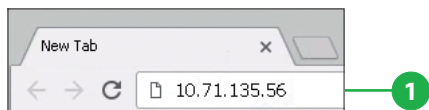
The default IP address configuration for the Probe is performed using DHCP. Make sure that your DHCP server is running and can be reached.

MEMO

The Probe can be discovered and accessed using the Cisco FindIT Network Discovery Utility that enables you to automatically discover all supported Cisco devices in the same local network segment as your computer. You can get a snapshot view of each device or launch the product configuration utility to view and configure the settings. For more information, see <http://www.cisco.com/go/findit>.

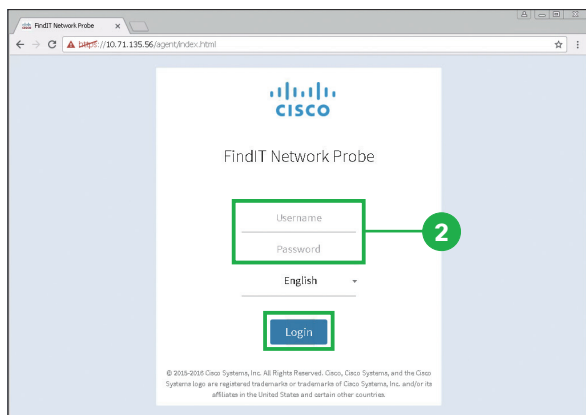
3 Configuring Probe

3-1 Launching Probe User Interface



- 1 Launch a web browser, enter the IP address into the address bar, and press Enter key.

The IP address is that checked at the step 15 in the section 2.



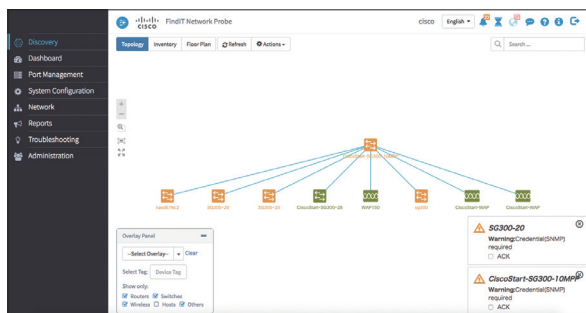
- 2 Enter the default username "cisco" and the default password "cisco", and click [Login].

Caution

You will be prompted to change the password for the cisco account. Ensure that the new password is at least 8 characters in length using at least 3 different character classes.

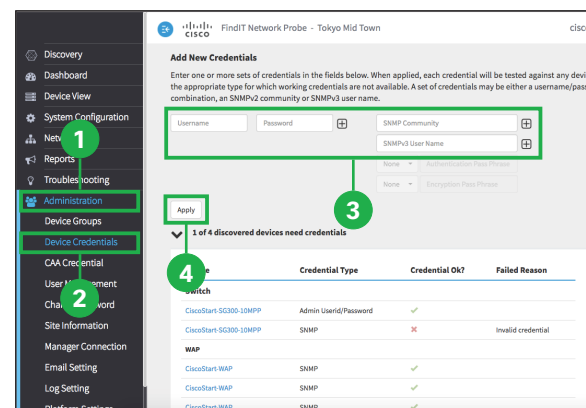
- 3 The Probe user interface is displayed.

The Probe discovers the network and generate Topology map automatically.



3-2 Setting up Device Credentials

For FindIT network to be able to manage the network devices, you must provide suitable credentials to allow access to the device.



- 1 Click [Administration].
- 2 Click [Device Credentials].

You will see a status message showing the total number of devices discovered and the number of discovered devices for which credentials are required. Click on this message to see a list of devices requiring credentials.

- 3 Enter a username and password combination and/or SNMP community in the respective fields.

If more sets of credentials are required, then click the [+] (plus) icon. This allows up to three sets of each type of credential to be entered.

- 4 Click [Apply].

MEMO

When the Probe discovers a device, it will initially attempt to access the device using the default credentials with the username "cisco", password "cisco" and the SNMP community "public".

The Probe will test each credential against each device for which a credential is required. Working credentials are saved for each device..

3-3 Changing Hostname, IP address, Time

You can change the Probe's hostname, IP address, and time.

Platform Settings

System settings:

Hostname: FindITProbe

IP Settings:

Connection Type: ☐ DHCP ☒ Static IP

IPv4 Address: 10.71.135.56 ✓

IPv4 Netmask: 255.255.248.0 ✓

IPv4 Default Gateway: 10.71.135.254 ✓

Static DNS 1:

Static DNS 2:

IPv6 Address:

IPv6 Prefix Length: ?

IPv6 Default Gateway:

Time Settings:

Source: ☒ Network Time Protocol ☐ Local Clock

NTP Server 1: 10.71.136.1 ✓

NTP Server 2:

Save **Reset**

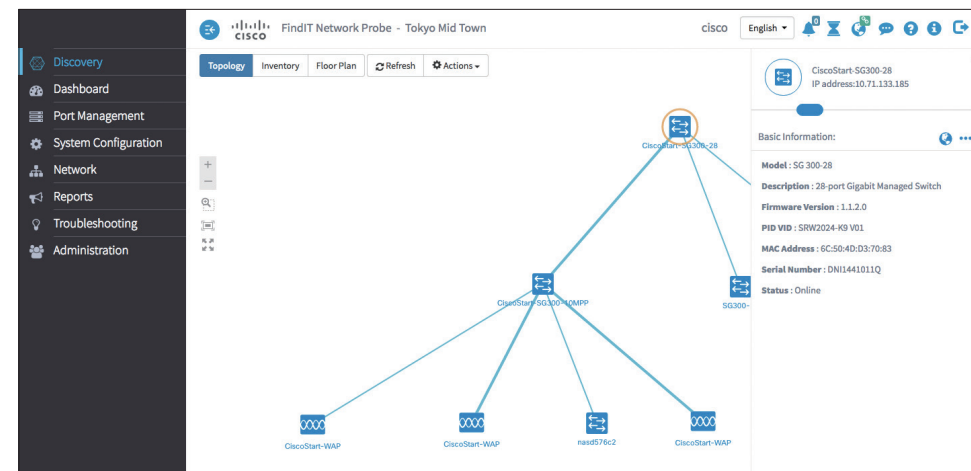
- 1 Click [Administration].
- 2 Click [Platform Settings].
- 3 Enter the parameters that you want to change
- 4 Click [Save].

4

Using Probe

4-1

Discovery



The **Discovery** page in the Probe offers multiple views of the network:

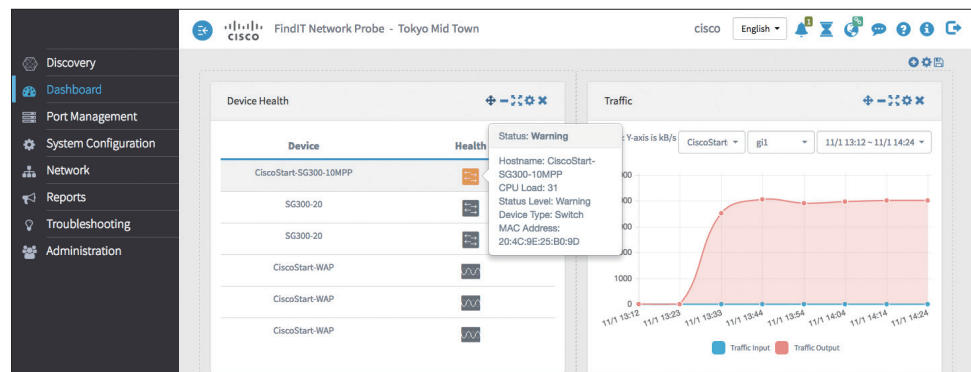
- **Topology** view: Displays a logical topology of all the discovered devices in the network. Information about each device is displayed, and you may perform actions on selected Cisco products.
- **Inventory** view: Displays a table listing all Cisco 100 to 500 Series devices in the network and information such as Model ID, Firmware Version, Serial Number, IP address and MAC Address. This view also allows the same actions to be performed that are provided in the **Topology** view.
- **Floor Plan** view: Lets you document the physical location of your network devices in your environment.



Caution

If you change the IP address, you have to re-access to the Probe using the new IP address.

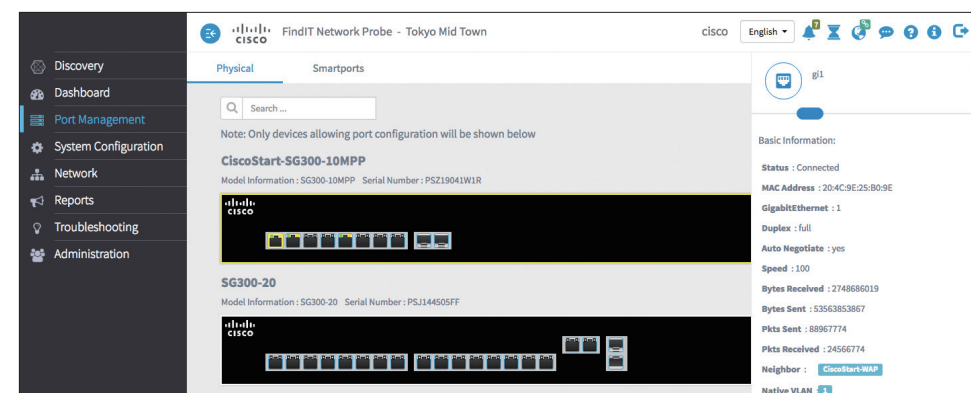
4-2 Dashboard



The **Dashboard** page in the Probe lets you view the real-time performance of the network and its devices and provides the data in a graphical format. The dashboard is a customizable arrangement of user-selectable widgets. Following are the widgets included by default in the dashboard:

- **Device Health** widget: Displays the overall health of the devices in the network.
- **WLAN Client Count** widget: Displays the number of devices associated with the selected wireless network.
- **Device Client Count** widget: Displays the number of devices associated with the selected wireless access point.
- **Traffic** widget: Displays a graph of the traffic flowing through the selected interface.

4-3 Port Management



The **Port Management** page in the Probe provides a front panel view of each device that includes switch ports that may be configured by the Probe. This page allows you to view the status of the ports including traffic counters, and make changes to the port configuration. This page also lets you view and configure the Smartports role for port on devices that support Smartports. You may use the search box to limit the devices displayed. Type in all or part of a device name, product ID, or serial number to find the desired device.

The **Port Management** presents two different views of the device:

- **Physical:** This view allows you to see the status and change the configuration of the port at the physical layer. You may view or change settings for speed, duplex, flow control, Energy Efficient Ethernet (EEE), Power over Ethernet (PoE), and VLANs. Each port is shown with a green LED indicating link and a yellow LED indicating that power is being supplied to the attached device.
- **Smartports:** This view allows you to see the current Smartports role for each port, and to change the role. Each port is overlaid with an icon indicating the current role.

4-4 Reports

Hostname	Device Type	Firmware Update Avail...	Current Firmware Versi...	End of Life Status	Maintenance Status
CiscoStart-SG300-10MPP	Switch	Up to date	1.4.1.3	N/A	N/A
nasd576c2	NAS	Up to date	1.2.0	N/A	N/A
CiscoStart-SG300-28	Switch	Up to date	1.1.2.0	N/A	N/A
CiscoStart-WAP	WAP	Up to date	1.0.1.2	N/A	N/A
CiscoStart-WAP	WAP	Up to date	1.0.1.5	N/A	N/A
CiscoStart-WAP	WAP	Up to date	1.0.1.5	N/A	N/A
SG300-20	Switch	Up to date	1.3.0.62	N/A	N/A
SG300-20	Switch	Up to date	1.3.0.62	N/A	N/A

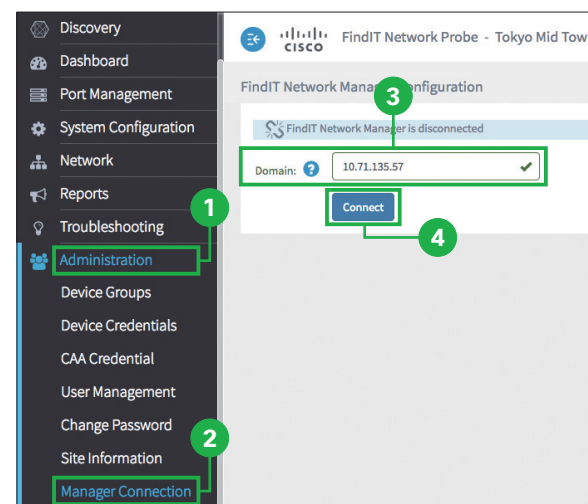
The Probe generates a series of reports about your network devices. These reports include the following:

- **Summary Report:** Provides a high level view of the summary of the network devices.
- **EoX Report:** Shows any devices that have an End of Life bulletin published.
- **Maintenance Report:** Lists all devices, the warranty status, and specifies if the device has an active support contract.

5

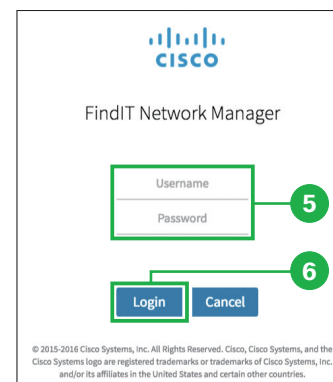
Connecting to Manager

If you deploy multiple Probe sites, you can manage these sites using the Cisco FindIT Network Manager. To establish an association between the Probe and the Manager, do the following steps.



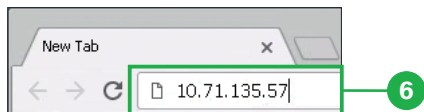
- 1 Click [Administration].
- 2 Click [Manager Connection].
- 3 Enter the IP address of the Manager into [Domain] field.
- 4 Click [Connect].

The login screen for the Manager is displayed.

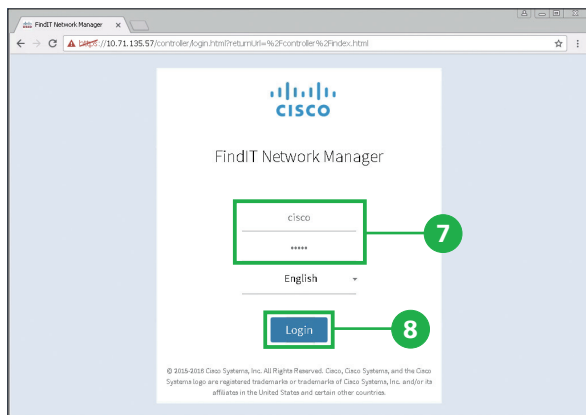


- 5 Enter the username and password of the Manager.
- 6 Click [Login].

This authenticates the Probe to the Manager and establishes the association.



- 6 Launch a web browser, enter the IP address of the Manager into the address bar, and press Enter key.



- 7 Enter the username and password of the Manager.

- 8 Click [Login].



- 9 The Manager user interface is displayed.

© 2016 Cisco and/or its affiliates. All rights reserved. Cisco and the Cisco logo are trademarks or registered trademarks of Cisco and/or its affiliates in the U.S. and other countries. To view a list of Cisco trademarks, go to this URL: www.cisco.com/go/trademarks. Third-party trademarks mentioned are the property of their respective owners. The use of the word partner does not imply a partnership relationship between Cisco and any other company. (1110R)