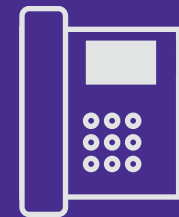
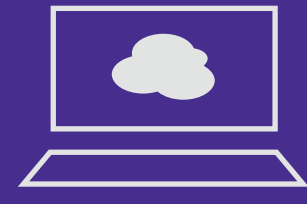


Help Desk



- Break-fix analysis
- Measure network performance response time and spot bottlenecks
- Perform malware and security threat analysis

IT Leadership



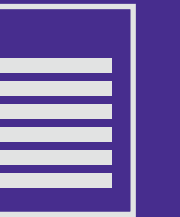
- Analyze network performance
- Plan and manage network capacity
- Optimize network resources
- Monitor for rogue and shadow IT devices
- Detect unauthorized cloud usage
- Simplify infrastructure troubleshooting
- Pinpoint network delays
- Examine overall bandwidth needs and how they vary during the day (STEM classes, special needs classes)
- Track most-used applications by: user/device/location/time of day
- Perform user experience analysis - is it fast, reliable, simple?
- Tune application QoS through analysis and optimization
- Analyze application and performance needs - What applications are consuming the broadband? Are they required?
- Determine bandwidth usage among:
 - Student information systems
 - Learning management systems
 - Netflix
 - YouTube
 - Google Apps for Education
- Plan for network upgrades
- Analyze student information system access
- Monitor access and bandwidth during online testing
- Analyze performance needs of digital text books, video, collaborative software
- Insure that all software on network is at correct version and revision level; important for security

Powerful Network Analytics Improve Education

Extreme Networks' Purview software provides meaningful analytics across the entire education infrastructure. The detailed network usage data provides insight into how network, application, and bandwidth resources are used throughout the campus or district for better learning.



Superintendent/Principal/ Curriculum Director



- Thoroughly understand technology use and classroom performance/engagement analysis
- Relate technology use to student performance and engagement
- Compare actual application use with expected use
- Identify allowable applications to be accessed by users/devices/locations/times of day
- Collect data to understand compliance
- Monitor digital citizenship
- Monitor for authorized uses of the network
- Track learning management system usage
- Insure proper access and bandwidth during online assessments and Common Core State Standards testing
- Monitor usage of public and restricted websites

Treasurer/CFO



- Analyze application licensing cost effectiveness
- Understand broadband usage and requirements
- Collect data to prepare for network growth

Teachers and Student Advisors



- Compare usage of students
- Better understand network requirements and usage within the classroom
- Track what applications are used during class time

Students



- Use analytics to spark student discussions, by sharing insightful statistics and usage data
- Create student projects involving analytics collection and analysis