



# Xerox® CentreWare® Web

Manage output devices  
effectively



# More value from your output device fleet

**Cut costs, intelligently manage networked output assets and increase the return on your IT investment with this free download from Xerox.** CentreWare Web is innovative browser-based software that installs, configures, manages, monitors and reports on networked printers and multifunction devices in the enterprise, regardless of manufacturer. Download free, from [www.xerox.com/centrowareweb](http://www.xerox.com/centrowareweb).

## Discover and manage all output devices

CentreWare Web gives IT managers the ability to find and manage printers and multifunction devices in the enterprise, whether they're networked or locally connected. It supports both Xerox and non-Xerox devices, so it's the ideal all-in-one tool to intelligently manage today's multi-vendor device environments.

Discover, install, configure, manage and troubleshoot output devices and queues. CentreWare Web provides an on-demand, customized summary status of SNMP printers, multifunction devices and queues within your network.

You can tailor device discovery to your particular network and traffic patterns. The tool supports local and remote discovery for multiple or segmented networks, within a single subnet or across subnets. Since it can automatically add directly or locally connected devices to the pool of networked devices, CentreWare Web gives a comprehensive picture of devices in an enterprise.

## Speed repairs with remote troubleshooting

CentreWare Web makes it easy to view, monitor and perform troubleshooting routines on remote devices that are in an error state. Troubleshoot individual devices or query and test a group of devices at the same time with detailed feedback and the ability to send test pages from the remote web console.

At a more detailed level, the tool evaluates the device problem and provides time-coded status updates along with an assessment of the skill level needed to solve the problem. Administrators can also review documents currently in the print queue and enable error traps to provide even more detail about the problem.

## Reduce IT costs with proactive monitoring

Give your helpdesk a rest by configuring CentreWare Web to alert IT managers of device problems before they occur. You can quickly configure the tool to send email alerts warning of low consumable levels, and device errors such as fuser or drum malfunctions, low memory conditions and offline hard disks.

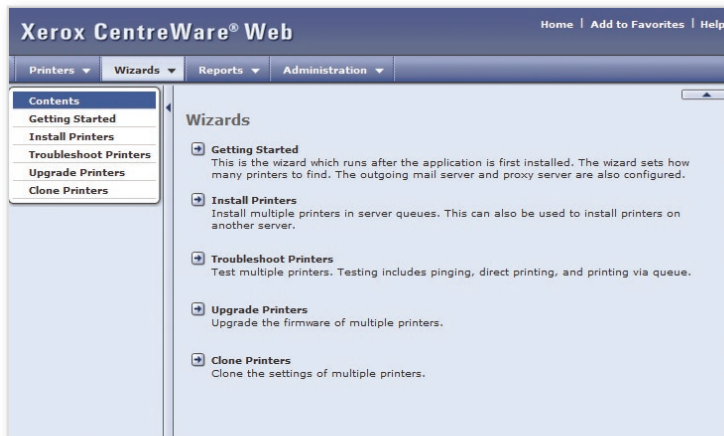
Administrators can find out about problems before they impact employees, resulting in fewer helpdesk or service calls, and increased IT staff productivity.

Best of all, CentreWare Web supports Xerox Smart eSolutions. This automated services platform makes it even easier to manage your fleet of Xerox equipment and is available at no additional charge.

## Centralize device management

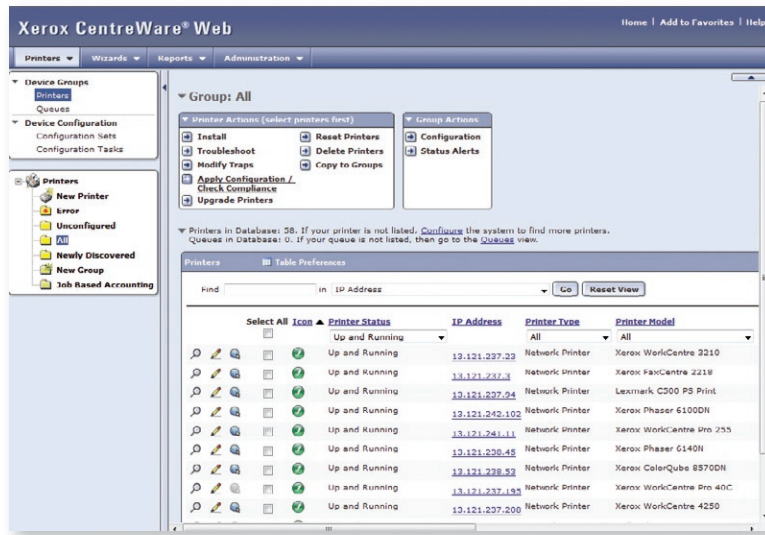
Easy to use CentreWare Web setup and basic installation wizards let you centralize device and software configuration. You can automatically configure firmware upgrades to be run on specific device classes remotely, during low network traffic hours, and receive confirmations once upgrades are configured.

The tool's intuitive interface makes it simple to configure even advanced features, with an extensive built-in help system and powerful customization tools.



CentreWare Web Wizards provide a guide to using features and functions, stepping system administrators through common tasks and helping them use the software to its full potential.

## Simplify complex device management issues



CentreWare Web's intuitive user interface makes it simple and easy to use even advanced features.

## Optimize and enhance output management

CentreWare Web's flexible reporting tools allow you to customize and schedule the reports you need to manage document production effectively. Combine tabular and graphical data to develop asset and usage reports, alert and status histories.

If your Xerox printers are network accounting enabled, CentreWare Web will retrieve, analyze and report print, scan, server fax and copy job data.

CentreWare Web supports validation and authentication systems, and can provide high-level usage and cost information or drill down to the individual job level. The tool can configure network accounting settings on these printers, including end-user management and can manage validations for up to 100,000 accounts, depending on the device.

Systems administrators may leverage their Active Directory by mapping an existing object as the Job Accounting account ID field. This brings all users in as valid accounts and can be automatically updated, saving valuable time.

## Scale along with your business

You can easily add new devices to your CentreWare Web system as needed, since its architecture supports anywhere from a few devices to more than 10,000; a single installation on one server can manage up to 5,000 devices.

CentreWare Web runs effectively on simple networks for small businesses, as well as on massive, multi-segmented networks supporting large government agencies, banks and conglomerates.

## Integrates with existing Windows security

CentreWare Web's support for standards-based security protocols such as Windows-based authentication, helps you quickly integrate the tool into your existing security systems. It supports the web's HTTPS protocol and native Windows security, eliminating the need to develop and support separate validation tools for output device access.

The tool's reporting capability allows administrators to review software and firmware update status on individual devices, ensuring that each has the latest security patches.

## Comprehensive reporting

CentreWare Web offers an extensive array of customizable reports, including assets, usage, alert history and network accounting. You can schedule automated reporting of individual printers, or groups of printers.

The reporting system helps you take control of color output costs as well, since it allows you to track color and black-and-white usage separately.



# CentreWare Web

## Device Management Software

### CentreWare Web benefits

#### Better cost management

- Proactive alert monitoring reduces service calls and downtime
- Easy deployment and simplified administration maximize IT staff productivity, letting you shift IT resources to other critical tasks
- Reduce tool expense and complexity; CentreWare Web is all you need to manage both Xerox and non-Xerox (RFC 3805 SNMP-compliant) output devices
- Centralized administration allows IT managers to remotely manage systems, eliminating the expense of on-site service calls
- Integrates with existing Microsoft Windows security, requiring no additional security/authorization tools
- Network accounting-enabled to provide accurate usage tracking, reporting and billing
- Ensures more accurate meter reads for bill-back to appropriate groups
- Usage tracking lets you intelligently manage assets cost-effectively
- Consistent reports in familiar, easy-to-read formats, giving you comprehensive, easy to understand analysis that's instantly actionable
- Flexible data collection settings can provide data daily, weekly, monthly or annually

#### More effective device administration

- Familiar web browser interface makes it easy to set up, configure, upgrade, repair and track devices on the network
- Troubleshooting tools simplify diagnosis and resolution of device problems
- Configuration sets let you establish templates to define network protocol, scanning, job accounting and security settings across compatible devices
- Configuration tasks can be easily created, scheduled and applied to a set of devices which are selected using a flexible logical (boolean) expression
- Enables a variety of settings specific to Hewlett-Packard devices
- Supports discovery of non-IETF MIB-compliant devices such as HP JetDirect-based printers
- Uses existing Microsoft Active Directory configurations, enhancing printer discovery and queue management
- Supports custom grouping of devices to make them easier to manage
- Group polling feature allows you to set polling intervals for specific device groups

#### Operating Systems Supported

- Windows XP SP3, Windows XP x64 SP3
- Windows Server 2003 SP2, Windows Server 2003 x64 SP2
- Windows Vista, Windows Vista x64
- Windows 7™ Professional
- Windows 7™ Professional x64
- Windows Server 2008
- Windows Server 2008 x64
- Windows Server 2008 R2
- Windows Server 2008 R2 x64

#### Hardware/System Requirements

(depending on configuration, additional hardware may be required)

- Free disk space: 3 GB (20GB if collecting job/historical data from thousands of devices)
- Minimum CPU: Less than 400 discoverable devices—2 GHz x86 processor, 1GB RAM
- More than 400 discoverable devices—2 GHz x86 processor, 2 GB RAM
- Databases supported: Microsoft SQL Server 2005, 2008, 2005 Express

*Database may be installed on the same system as CentreWare Web. A separate database server is recommended for any of the following configurations:*

- More than 20 groups configured for concurrent status polling
- More than 20 alert profiles specified
- Job data consumption is greater than 100,000/week

#### Client Requirements

Before installing CentreWare Web, you must first install the Microsoft 3.5.Net framework. The CentreWare Web client interface is web-browser based and can be accessed on a platform that supports the following:

- Microsoft® Internet Explorer version 6.0 or higher

For more information, call **1-800-ASK-XEROX** or visit us at **[www.xerox.com/centwareweb](http://www.xerox.com/centwareweb)**

© 2010 Xerox Corporation. All rights reserved. Xerox®, CentreWare®, and the sphere of connectivity design are trademarks of Xerox Corporation. Microsoft®, Windows® and Visual Studio® are trademarks of Microsoft Corporation. HP is a trademark of Hewlett-Packard Company. Netscape® is a registered trademark of AOL Time Warner, Inc. 2/10 610P711990D SFTBR-05UE

