



## HP TRIM Web Client, a zero footprint browser interface designed for ease of use for the knowledge workers.

HP TRIM Web Client is an important addition to HP TRIM software, offering a new way to work with information from a zero footprint web client, and adding more choice in access methods to HP TRIM to suit your specific user type and your organizational preference.

Developed with a focus on usability for the end user, the HP TRIM Web Client is designed to be consistent with the look and feel of the HP TRIM rich client and customizable to suit your intranet. Complying with US 508 Accessibility Guidelines and verified to US DoD 5015.2 V3 with HP TRIM software, the Web Client is ideal for the knowledge workers.

## Easy to use

### User experience

The HP TRIM Web Client provides beginners with an intuitive browser interface that is easy to use, enabling them to become productive faster. Forms and dialogs follow the same look and feel of the rich client providing a familiar environment for users of HP TRIM.

The layout of the HP TRIM Web Client has the same look and feel of the grid control that is familiar to HP TRIM rich client users. The grid display has user defined columns with customizations maintained at the server and shared between the HP TRIM Web Client and the HP TRIM rich client. User preferences are reflected when the user moves between the HP TRIM rich client and the HP TRIM Web Client.

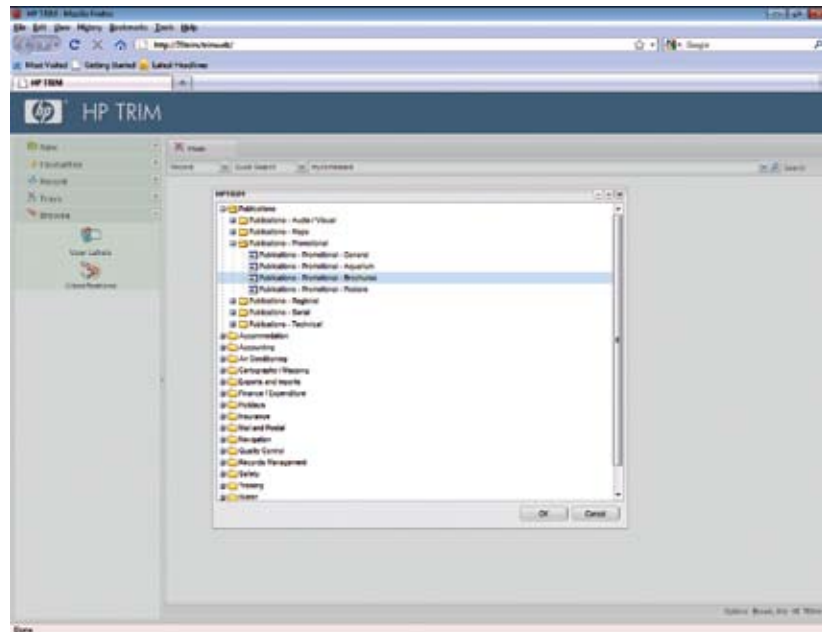
The search function has inbuilt shortcuts for one click operation to assist users to perform the most common searches. These are Favorite Records, Recent Documents, Recent Containers, Checked Out Documents, In Tray, Due Tray, In or Due Tray, Work Tray, Saved Search (hierarchical), Label (hierarchical), and Classification (hierarchical). Shortcuts arranged in a hierarchical manner provide the user with an alternative to string-based searching.

Beginners will find it easy to perform quick searches and learn search syntax. Advanced users are assisted to build complex searches with criteria organized in a tree structure for easy manipulation. Pre-packaged customizable search forms are provided along with the ability to add new forms.

The Saved Search chooser enables the user to save searches as private saved searches, favorite searches, or as public saved searches. The user has the ability to sort and filter search results which incorporates page-based scrolling with the number of results per page customizable by the user.

Users can select and initiate actions from search results with Right Click Drop Down functions. You can view documents using the capabilities of the browser and email formats are rendered to HTML for viewing inside the browser. You can also create URL links from a context menu for RSS feed, URL Link, and Saved Search.

**Figure 2:** The user browses the hierarchical classification



© 2015 Pearson Education, Inc. or its affiliate(s). All rights reserved.

The HP TRIM Web Client is customizable with HTML style sheets so you can make the HP TRIM Web Client appear as part of your intranet. Authentication is with the windows standard authentication model establishing credentials with the HTTP server.

HP TRIM adds more choice in access methods to HP TRIM adding the HP TRIM Web Client to the options of traditional rich client and SharePoint.

## A complete solution

## Comprehensive training

HP provides a comprehensive curriculum of HP Software and IT Service Management courses. These offerings provide the training you need to realize the full potential of your HP solutions, increase your network optimization and responsiveness, and achieve better return on your IT investments.

With more than 30 years experience meeting complex education challenges worldwide, HP knows training. This experience, coupled with unique insights into HP Software products, positions HP to deliver the optimum training experience. For more information about these and other educational courses, visit [www.hp.com/software/education](http://www.hp.com/software/education)

## HP Financial Services

HP Financial Services provides innovative financing and financial asset management programs to help you cost-effectively acquire, manage, and ultimately retire your HP solutions. For more information on these services, contact your HP sales representative or visit [www.hp.com/go/hpfinancialservices](http://www.hp.com/go/hpfinancialservices)

## Contact information

To find an HP Software sales office or reseller near you, visit [www.managementsoftware.hp.com/buy](http://www.managementsoftware.hp.com/buy)

## For more information

For more information on HP TRIM documentation, evaluation software, and QuickSpecs, please visit HP TRIM Web site [www.hp.com/go/hptrim](http://www.hp.com/go/hptrim)

For details on best practices, insight from industry experts, and blogs, please visit HP Information Management Digital Hub [www.hp.com/go/imhub/trim](http://www.hp.com/go/imhub/trim)

## HP Services

Get the most from your software investment. With HP, you have access to standards-based, modular, multi-platform software coupled with global services and support for all aspects of your application lifecycle needs. The wide range of HP service offerings—from online self-solve support to proactive mission-critical services—enables you to choose the services that best match your business needs.

For an overview of HP Software Professional Services for HP Information Management software, visit [www.hp.com/go/imservices](http://www.hp.com/go/imservices)

To access technical interactive support, visit Software Support Online at [www.hp.com/managementsoftware/services](http://www.hp.com/managementsoftware/services)

To learn more about HP Software Customer Connection, a one-stop information and learning portal for software products and services, visit [www.hp.com/go/swcustomerconnection](http://www.hp.com/go/swcustomerconnection)

## Technology for better business outcomes

To learn more, visit [www.hp.com/go/hptrim](http://www.hp.com/go/hptrim)

© Copyright 2010 Hewlett-Packard Development Company, L.P. The information contained herein is subject to change without notice. The only warranties for HP products and services are set forth in the express warranty statements accompanying such products and services. Nothing herein should be construed as constituting an additional warranty. HP shall not be liable for technical or editorial errors or omissions contained herein.

4AA0-3952ENW, February 2010



### Get connected

[www.hp.com/go/getconnected](http://www.hp.com/go/getconnected)

Current HP drivers, support & security alerts  
delivered directly to your desktop

