

Do you worry your communications technology will limit your operations and growth?

With CenturyLink™ Ethernet Private Line never get stuck with outdated equipment again



Support your new applications, growing demands and changing business needs

Deciding on what network equipment to buy can be a difficult process. You want technology that will accommodate new demands, new applications and the growing requirements of your technology-enabled workforce. E-Line accommodates all your needs, enabling increased efficiency and improved return-to-drive success for your business. Get a state-of-the-art private line solution, tuned to your requirements, to aggressively compete today and tomorrow.

E-Line (Ethernet Private Line) uses Ethernet over multi-protocol label switching (MPLS) via a non-oversubscribed network that combines the benefits of intelligent routing with the advantages of 100%-committed bandwidth. No other private line service can match your need for high performance, reliability, right-sizing and lower costs. You can expect improved response times, increased application quality, faster time to market, increased efficiencies and improved ROI in your network. Plus, you'll be able to scale to your applications and budget.

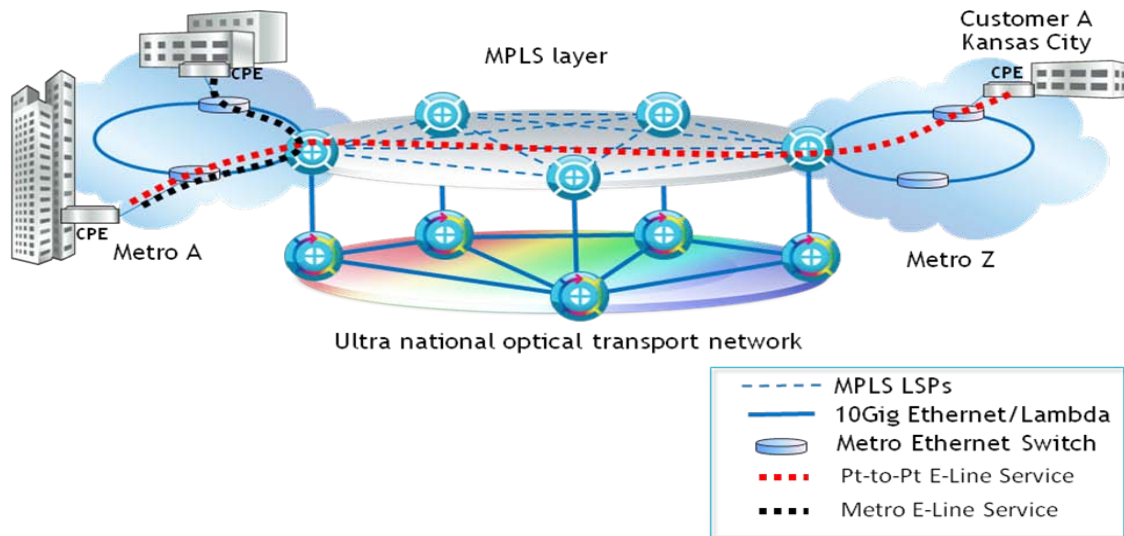
Ways to scale your applications and budget

- High-performance with dedicated bandwidth and fast response times
- Simple to configure, operate, manage and change
- Flexible and scalable with your choice of bandwidth from 5Mbps to 1,000Mbps
- ROI with lower costs compared to private line technologies
- Faster delivery with extensive pre-provisioning of network resources
- Standards compliant including MEF certified and MPLS traffic-engineered network
- Full support from the CenturyLink project implementation and account teams

Contact your CenturyLink Representative today!



E-Line metro and national Ethernet over MPLS over DWDM



What applications run better with E-Line?

You will see a marked improvement along point-to-point connections to data centers and storage-area networking including: disaster recovery, business continuity, Internet access, peering and meet-me interconnections. After E-Line is configured for multiplexing (multiple virtual circuits per port from one location routed to other E-Line locations), you can have hub and spoke multi-site connections within or between any E-Line market.

E-Line is available in 16 markets including: Atlanta, Boston, Chicago, Dallas, Denver, Houston, Indianapolis, Kansas City, Los Angeles, Newark, New York City, Philadelphia, Phoenix, Sunnyvale CA, Tampa and Washington DC.

What you get with E-Line

- Better predictability and control over your applications for national and local networking
- Granular bandwidth you specify from 5Mbps to 1Gig Ethernet
- Rapid provisioning on the CenturyLink network with optimal traffic-engineered routing resulting in low latency and minimal congestion
- Protected (50–100 milliseconds protection failover) and unprotected service applications
- MEF, IEEE and ITU standards compliant with robust service level agreement (SLAs)
- Control Center self-service online portal with performance reporting
- Multiplexing with point-to-multipoint in hub and spoke configuration

Contact your CenturyLink Representative today!



Why should I consider a change?

Using E-Line offers many advantages over a traditional private line service. You get the same reliability you depend on with private line. Plus, you also get increased choice of bandwidth granularity, improved operational efficiency, reduced cost and greater flexibility that all together offers increased return on investment.

Here's why:

Private Line	E-Line	Why E-Line is a better choice
Reliable, dedicated bandwidth	Reliable with dedicated, 100% committed bandwidth	Optimized performance using Ethernet over MPLS and DWDM technology
Standard provisioning intervals reliant on traditional methods	Faster provisioning using Ethernet over MPLS technology with pre-provisioned 10Gig Ethernet backbone	Speed to market and scale to meet demanding application needs
High costs	Lower costs per data bit and applications	Meets varying ROI requirements
Last mile access dependent	Large variety of access methods	More flexible across geographic conditions

Contact your CenturyLink Representative today!

