

DATA SHEET

MapInfo® Manager™

Spatial Data Asset Management

TAKE COMMAND OF YOUR SPATIAL ASSETS—CATALOGUE, PUBLISH AND
SHARE YOUR DATA



Summary

Pitney Bowes MapInfo Manager enables organisations to very easily build and manage a catalogue which represents a single point of truth for their spatial data. This catalogue, built on open standards, facilitates the easy discovery and sharing of spatial data for all who may need it, internally or externally to your organisation.

Benefits

- MapInfo Manager makes your spatial data easy for all to find, understand, share and use
- Find and exploit “hidden” data assets you were unaware of
- Save costs by avoiding duplicate data collection or purchases
- Helps to meet EU INSPIRE obligations
- Built on open standards, available to a wide variety of systems/users

OVERVIEW

Pitney Bowes® MapInfo® Manager™ is a server based application that provides the necessary tools to build and manage a centralised library for your organisation's spatial data assets. This includes creating one or more searchable catalogues of spatial data as well as tools to very easily populate and maintain these catalogues with useful information about your datasets. Your data becomes easy to find, understand, share and use for all who may benefit from it.

Questions to consider:

- Do you have a large number of MapInfo Professional tables in use?
- Do you find users make copies of MapInfo Professional tables because they are hard to find?
- Is time wasted by users searching for the data they need?
- Are your expert users spending too much time helping colleagues find the data they need?
- Have data sets been used inappropriately because they were not well defined?
- Have data collection or cleanup efforts been overlapped or duplicated?
- Are one or more personnel policing data stores, network volumes and/or directory structures?
- Have useful data sets been discovered that had remained hidden due to lack of visibility within the organisation?
- Has duplicate data been purchased by different departments within your organisation?

Metadata—The Key to Realising the Potential of Your Data

The core benefit of MapInfo Manager is its catalogue of your organisation's enterprise spatial data. This catalogue consists of metadata which is the information describing your data. Metadata can include information such as the vintage, source, owner, origin, location, geographic area and more. It essentially establishes a data set's purpose for anyone who discovers the data. A catalogue of metadata assists users in finding and accessing the data they require as well as understand the suitability of a data set for a specific purpose. If there are questions about the data, then the “owner” or custodian of the data can also become known through the metadata.

The metadata catalogues created in MapInfo Manager are built using the Open Geospatial Consortium (OGC) Catalogue Services Web (CSW) standard. These can be searched by MapInfo Professional users (working with the Catalogue Browser capability introduced in MapInfo Professional v10.5) along with other OGC compliant CSW service applications.

Creating and Editing Metadata is Easy!

With MapInfo Manager, building a library of metadata is easy. Some of the metadata can be obtained in an automated manner and done in a bulk collection effort, referred to as harvesting. Harvesting is useful for those metadata items that can be determined in an automated fashion.

MapInfo® Manager™

Spatial Data Asset Management

In addition, certain metadata fields may be common to some or all of your datasets (such as the owner or contact person). Repeated values can be applied automatically through the use of templates.

Finally, edits and modifications to metadata can be done to individual records or to multiple records at once.

Share – Simplify – Control

MapInfo Manager enables data custodians, GIS managers and IT administrators to control how data is published, how it can be discovered and how it can be accessed by a targeted user base.

Multiple catalogues can be created and shared. Having multiple catalogues offers the ability to publish information on specific data sets to specific audiences. For example, an organisation might wish to share certain data sets with the general public (as required by INSPIRE in Europe). This same organisation may have additional datasets that are used internally. A different catalogue can be created for each of these two different data sharing requirements.

Standards Compliant

MapInfo Manager adheres to various standards to maximise system and agency interoperability including ISO 19115 for

metadata statements, OGC for catalogue and data publishing, and many others. For those organisations directly or indirectly impacted by the European Union INSPIRE directive, MapInfo Manager utilises the necessary standards to meet your INSPIRE requirements.

MapInfo Manager Benefits

- “Single point of truth” reference library for your spatial data.
- Location Intelligence and GIS users can quickly and easily find and access the data they need, saving time and resources.
- Communicate the intent and purpose of the data to avoid mis-use or mis-interpretation.
- Saves on costs and effort by avoiding data duplication and prevents duplicate data purchases.
- Integrates with any OGC CSW compliant application and directly integrates with MapInfo Professional.

IMPROVE THE MANAGEMENT OF YOUR SPATIAL DATA ASSETS TODAY. FOR MORE INFORMATION ON MAPINFO MANAGER, CALL US OR VISIT OUR WEBSITES.

NOTE: Europe, Middle East, India and Africa can link directly to our (English) MapInfo Manager web page at www.pbinsight.eu/mapinfomanager

EUROPE/UNITED KINGDOM

Minton Place
Victoria Street
Windsor, Berkshire SL4 1EG
+44.800.840.0001

pbsoftware.emea@pb.com
pitneybowes.co.uk/software

ASIA PACIFIC/AUSTRALIA

Level 7, 1 Elizabeth Plaza
North Sydney NSW 2060
+61.2.9437.6255

pbsoftware.australia@pb.com
pbsoftware.singapore@pb.com
www.pbinsight.com.au

INDIA

5th Floor, Tower B
Logix Cyber Park
NOIDA UP, India
Troy, NY 12180

+91.120.402.6000

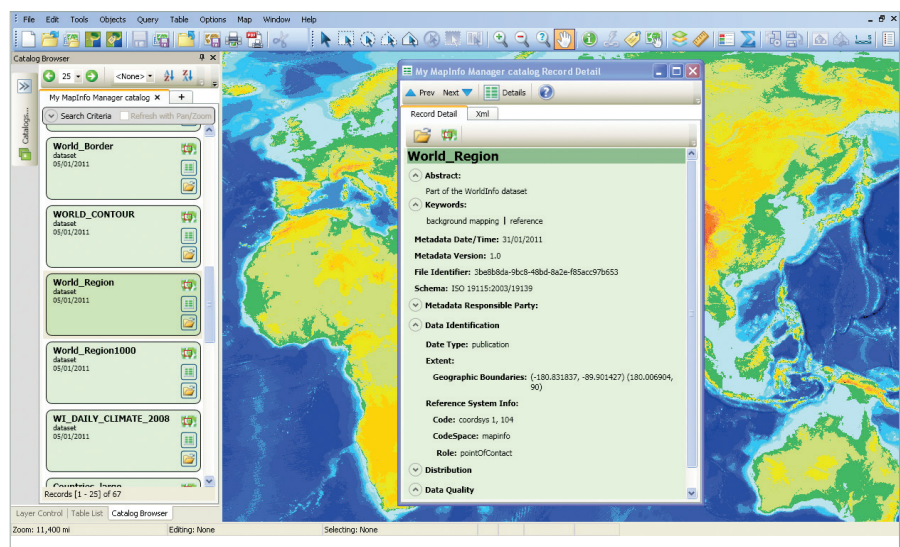
pbsoftware.india@pb.com
pitneybowes.co.in/software

UNITED STATES

One Global View
Troy, NY 12180

1.800.327.8627

pbsoftware.sales@pb.com
www.pb.com/software



MapInfo Manager creates a single point of truth for your MapInfo spatial assets – accessible from MapInfo Professional or any other standards compliant application (OGC CSW).

Every connection is a new opportunity™

Pitney Bowes Software, Inc. is a wholly-owned subsidiary of Pitney Bowes Inc. Pitney Bowes, the Corporate logo, MapInfo Manager and MapInfo Professional are [registered] trademarks of Pitney Bowes Inc. or a subsidiary. All other trademarks are the property of their respective owners. ©2012 Pitney Bowes Software Inc. All rights reserved.

92717 UK 1201