



## The Sage Software Difference

Sage Software, combined with its U.K. parent company The Sage Group plc, is the leading worldwide provider of accounting and business management solutions for small to midsized companies. When you choose Sage Software, you can count on:

- Specialized products to fit your needs
- Dynamic training programs available through an Authorized Training Center near you
- Award-winning support to ensure your system runs smoothly
- A nationwide network of resellers, consultants, and CPAs for local advice and support
- The stability, strength, and continuing commitment of Sage Software



56 Technology Drive  
Irvine, CA 92618-2301  
800-854-3415

[www.sagesoftware.com](http://www.sagesoftware.com)

©2005 Sage Software, Inc. All rights reserved. The Sage Software Logo and the Sage Software product and service names mentioned herein are registered trademarks or trademarks of Sage Software, Inc., or its affiliated entities. Crystal Reports is the registered trademark and technology of Business Objects SA. All other trademarks are the property of their respective owners.

5107913 09/05 05-3797/0905



SAGE MAS 90 SAGE MAS 200

**sage**  
software

*Your business in mind.*

When you choose a Sage MAS 90 or Sage MAS 200 ERP system from the Sage Software family of integrated accounting, distribution and manufacturing software products, you don't have to compromise on the way your accounting system works. Whatever your industry or size, there's a Sage MAS 90 or 200 product that is a good fit for your company, with systems that can be tailored to match your internal workflow and business process. Today's Sage MAS 90 and 200 family of products are adaptable to new technologies and used by more businesses than any other product suite in its range. An easy-to-use graphical interface and presentation-quality reporting give Sage MAS 90 and 200 the practical benefits you need. The product family is designed to improve productivity and provide simplified and streamlined navigation, customization capabilities and integration with other desktop applications such as Microsoft Word and Excel software.

Regardless of your company's size or industry, we have a no-compromise solution for you. Sage MAS 90 offers a powerful, easy-to-use graphical accounting solution, and Sage MAS 200 delivers superior client/server performance and remote access compatibilities. Choose Sage MAS 90 or 200 for a tightly integrated accounting and business management system that can help maximize your company's productivity and profitability.



## Sage MAS 200

Are you seeking peak performance accounting for your Windows NT network? Then Sage MAS 200 is for you if your larger, growing company has high transaction volume, wide area network (WAN) requirements, or needs an Internet-ready solution.

### THIN-CLIENT ARCHITECTURE

Sage MAS 200 takes advantage of the very latest Internet- and intranet-compatible thin-client architecture via TCP/IP connectivity. This architecture delivers top performance in WAN and remote access environments, making Sage MAS 200 ideal for multi-site businesses.



### SAGE MAS 90 AND 200 EASE OF USE

*The Business Desktop gives you a choice of using the Explorer-like tree view or the drop-down menus to find sub-menu and tasks. Each module contains a custom reporting menu for you to add your company-specific reports.*

### CHOICE OF DATABASE PLATFORM

Sage MAS 200 is available on either a Microsoft SQL Server relational database platform, or a high performance Providex database.

### PERFORMANCE

The client/server engine can provide peak performance even when your company has high transaction-processing demands or a large number of accounting users.

### ENHANCED DATA INTEGRITY

A critical benefit of thin client/server architecture is the reduction in network traffic. Lower traffic can increase reliability and data integrity systemwide.

## Reporting Tools that Transform Data into Business Intelligence

You require an accounting and business management system that can quickly and easily organize data, create professional reports, and provide you with the analytical tools you need. By capturing data, transforming it into business intelligence, and providing the insights for sound and prosperous business decisions, Sage MAS 90 and 200 take reporting tools to the next level.

### BUSINESS INSIGHTS DASHBOARD FOR THE EXECUTIVE

Our first-of-its-kind system is a browser-based tool that gives your company executives easy access to accounting and financial data. Business owners, CEOs, and CFOs often don't have the time to get familiar with the intricacies of the company's accounting and business management software. Now there's a quick and easy solution. With Business Insights Dashboard, your executives can simply log on to their computer and have their desired information appear in a graphical format right in their Web browser.

### BUSINESS INSIGHTS REPORTER

Custom reporting that allows you to view data in ways that are meaningful for your unique business is essential in today's market. The Business Insights Reporter is a wizard-based tool that even non-technical managers can use to create and run reports. After the report definition is complete, the report is output using Crystal Reports® presentation-quality output.

### FINANCIAL REPORTING EXTENDER (FRX)

Financial Reporting Extender, Desktop version, comes with the Sage MAS 90 and 200 General Ledger module. With Microsoft FRx, you can create complex financial reports that can be printed, exported to an Excel worksheet, or distributed to non-accounting system users and viewed in the DrillDown viewer.

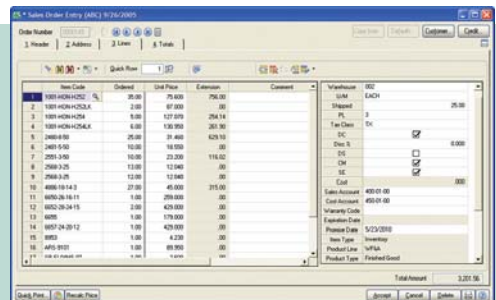
## Customization and Personalization for Productivity Gains

Included with purchases for five users and above (and optional for under five), the Custom Office module includes powerful customization capabilities by allowing you to tailor the Sage MAS 90 and 200 screens to match internal workflow and industry requirements. With Custom Office you can:

- Improve data entry and accuracy by hiding unused fields, specifying default values, changing tab sequences, and modifying screens to match your business process.
- Add new folder tabs to forms and use them to provide space for more user-defined fields (UDFs) without having to reorganize multiple fields to make space.
- Insert new fields, such as nicknames or birthdays, for more personalized customer service.
- Create a button to launch a VBScript or JScript to perform calculations, or to interface with an external application such as Microsoft Word or Excel.

Each user can also personalize the system to match their specific need:

- Reorder, resize and freeze columns in any grid based data entry form for improved tabbing and line item visibility
- Move data entry fields between the primary and secondary data entry grids for heads-down data entry.
- Preserve window settings for individual tasks such as height, width and secondary grid location.
- Save report settings for future use such as filters and printer settings to limit keystrokes and improve productivity



*You can easily rearrange columns and move data entry fields between the primary and secondary grids.*

## Functional Depth

With its broad-ranging series of modules and industry-specific add-ons, the Sage MAS 90 and 200 product lines possess the functionality that midsized businesses need to achieve a competitive edge. The product line addresses an ever-widening range of business needs, and represents the right accounting software choice for an increasing number of companies of varying sizes. The following suites of modules are available:

### GENERAL ACCOUNTING APPLICATIONS

- General Ledger with FRx Desktop
- Accounts Payable
- Accounts Receivable
- Bank Reconciliation
- Payroll
- TimeCard
- Sage FAS Fixed Assets
- Sage Abra HRMS

### BUSINESS PRODUCTIVITY APPLICATIONS

- Custom Office
- Visual Integrator
- F9
- Business Insights
- Business Alerts

### INDUSTRY-SPECIFIC SOLUTIONS

- Construction
- Professional Services
- Wholesale Distribution
- Manufacturing

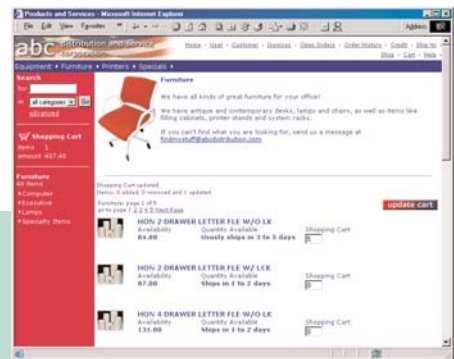
### CUSTOMER RELATIONSHIP MANAGEMENT

- ACT! by Sage
- Sage CRM SalesLogix
- Sage CRM
- Sage CRM.com

## Strength Through Global Access

With Internet e-commerce capabilities fast becoming imperative for companies seeking to maintain a worldwide competitive advantage, the e-Business Manager module for Sage MAS 90 and 200 can allow your customers to log on through the Internet and securely place an order directly into your Sage MAS 90 or 200 system; 7 days a week, 24 hours a day. The e-Business Manager module can provide you with numerous benefits, including:

- Ease of implementation – Designed to be implemented without requiring expensive Web or network consultants, e-Business Manager is simple to set up and can even be installed in a remotely hosted environment.
- Three applets – The capabilities consist of a core e-Business Manager system module and three applets: .inquiry, .order, and .store. The customer inquiry applet enables account and order inquiry capabilities; .order is a shopping cart applet with business-to-business order entry functionality; and .store allows you to sell your products and services to anonymous customers in a secure Web environment.
- Security – Only authorized users can access your application data, while allowing your customers to securely access the data they need.



### CONDUCT BUSINESS OVER THE WEB

*Sage MAS 90 or 200 and the e-Business Manager module can supply an out-of-the-box solution to transact business-to-business e-commerce, worldwide, over the Internet.*